

# Corporate partnerships at the ICR





Our mission is  
to make the  
discoveries that  
defeat cancer.

# You and your staff are unique.

Advances in cancer research have paved the way for a new generation of treatments. Patients are living longer and better than ever before.

But the disease continues to claim far too many lives. And the world's cancer burden is growing.

The ICR's Corporate Partnerships Team will work with you to create a bespoke partnership that makes you and your colleagues proud to be a part of our mission.

We very much look forward to getting to know you. In the meantime, this brochure of opportunities is designed to help you get started.

The ICR's mission is to make the discoveries that defeat cancer. If we work together, we can make them faster.



## **Annie Edwards**

Senior Corporate Partnerships Manager

E: [Annie.Edwards@icr.ac.uk](mailto:Annie.Edwards@icr.ac.uk)

T: +44 203 437 6057

## **Sam Heatman**

Corporate Partnerships Officer

E: [Sam.Heatman@icr.ac.uk](mailto:Sam.Heatman@icr.ac.uk)

T: +44 203 437 6375

# An unrivalled track record in cancer drug discovery



The ICR is home to the most successful academic cancer drug discovery centre worldwide.

Drug discovery is an intensely creative endeavour that, with the right investment, brings kinder treatments to patients and saves lives.

ICR researchers discovered:

Abiraterone for prostate cancer.

And our scientists were fundamental to the discovery and development of:

Capivasertib for breast cancer; and  
Olaparib for ovarian, breast, pancreatic and prostate cancers.

Three approved drugs, since 2012, that are now helping cancer patients across the world.

# Bringing the science to you

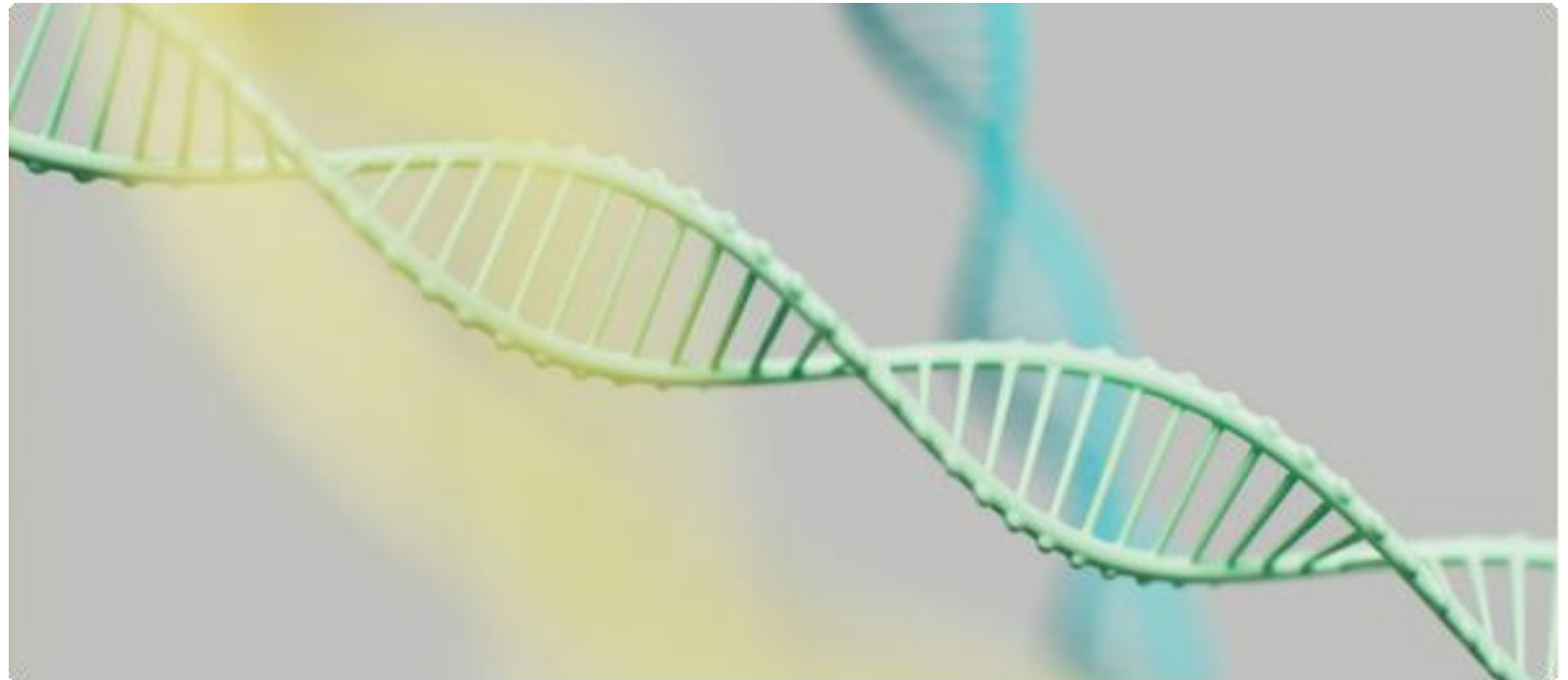
A lunch and learn session breaks up the working week and encourages staff to spend time together at the office.

We will bring our fascinating science to you in an accessible format.

Give your staff the opportunity to learn about:

- Cancer discoveries: the good news.
- The genetics of cancer risk.
- Case studies and personal stories.

Contact [corporate@icr.ac.uk](mailto:corporate@icr.ac.uk) to arrange a date.



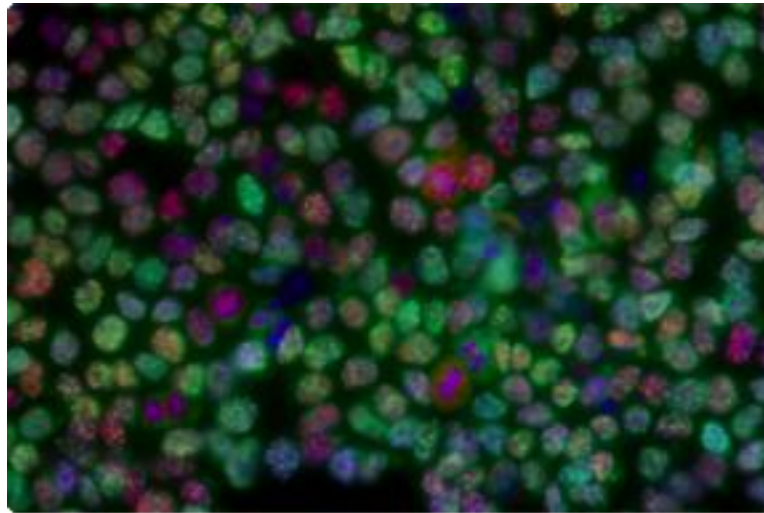
# Groundbreaking discoveries

The ICR has an outstanding record of scientific achievement dating back more than 100 years.

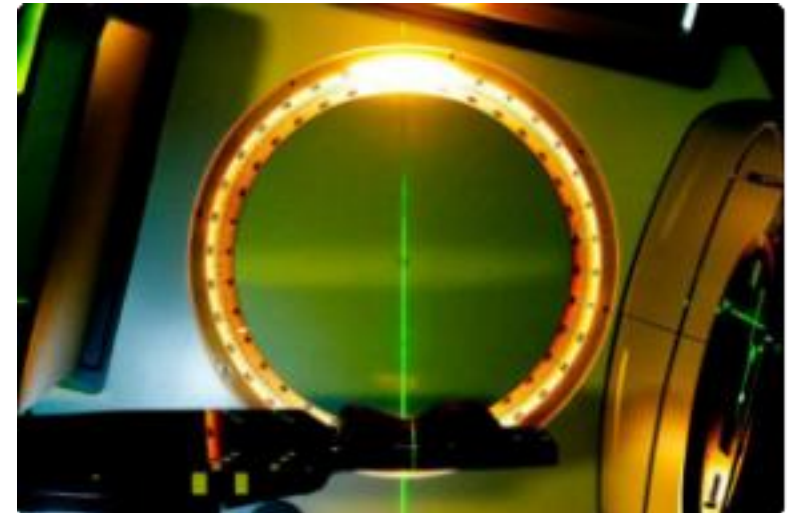
Our scientists:



First identified many of the cancer-causing chemicals in cigarette smoke and coal tar – including the first pure carcinogen ever to be isolated.



Provided the first conclusive evidence that the basic cause of cancer is damage to DNA, marking a turning point in understanding of the disease.



Have made major contributions to modern high-precision radiotherapy techniques, increasing their effectiveness and reducing side effects.

---

# Invitations to exclusive gatherings

---

The ICR hosts multiple evening receptions per year. These are unique opportunities to hear from some of the UK's leading experts in cancer.

You will also be able to network with like-minded people who also support our work to make the discoveries that defeat cancer.



“It was a privilege to be invited to listen to Victoria Derbyshire interview the incredible Professor Sir Mel Greaves at the Royal Society of Chemistry hosted by The Institute of Cancer Research.”



Daniel May  
Director at Socius

# Private lab tours with our scientists



Corporate supporters will be invited to visit our labs and meet our scientists at our Sutton and Chelsea campuses.

Lab tours bring the science to life and are the best way to understand what is really going on at the vanguard of cancer research discoveries.



# Twin a boardroom with one of our labs

Showcase your commitment to defeating cancer by twinning one of your office meeting spaces with one of our labs.

Both the chosen boardroom and lab will bear a plaque to celebrate your generosity.

For a £20,000 donation to the lab, you can be twinned with us for two years.

To explore this opportunity, please contact [corporate@icr.ac.uk](mailto:corporate@icr.ac.uk).



# Sports and challenge events with #TeamICR



## Run with us:

- The London Marathon
- Edinburgh Marathon Festival
- London Landmarks Half Marathon
- Royal Parks Half Marathon
- The Terry Fox Run

## Cycle with us:

- Ride London
- London to Paris Cycle
- One More City

## Challenge yourself:

- Ben Nevis Trek
- The Climb of Life
- Tough Mudder

[Book your place today.](#)

Top tip: company match funding is a great incentive for staff fundraisers to go the extra mile.



icr.ac.uk

**ICR** The Institute of  
Cancer Research

## Join Team ICR!

Be part of something life-changing – take on a challenge and support our world-leading cancer research.

Whether you enjoy running, cycling, trekking or endurance, your effort can power the life-saving breakthroughs being made in our labs.

Our discoveries are defeating cancer thanks to the dedication of people like you. And we'll support you every step of the way – cheering you on until you reach the finish line.

### 2026 Running Events

London Landmarks Half Marathon  
Sunday 12th April

TAKE PART

VOLUNTEER

London Marathon  
Sunday 26th April

APPLY FOR 2027

VOLUNTEER

Great North Run  
Sunday 13th September

TAKE PART

Terry Fox Run London  
Sunday 13th September

TAKE PART

VOLUNTEER

Berlin Marathon  
Sunday 27th September

TAKE PART

VOLUNTEER

Royal Parks Half Marathon  
Sunday 11th October

TAKE PART

VOLUNTEER



“We’ve all been touched by cancer at some point in our lives, whether personally or through a family or friend. Sadly, half of us will develop cancer in our lifetimes. That’s why the work of The Institute of Cancer Research is so important.”



Olaide Oboh  
Executive Director at Socius

# The Terry Fox Run UK

Terry Fox wasn't just an inspiring Canadian. He was an inspiring human. By age 22, he had raised \$24.3m for cancer research by running a marathon a day across Canada on his prosthetic leg.

Every year, we honour this brave young man's legacy by following in his footsteps at the Terry Fox Run.

Join us this autumn and choose your distance, then run, walk or cycle your way to the finish line. Entry is free and all are welcome.



[Book your place today.](#)

# Bespoke challenge events

We can help you organise bespoke fundraising and team-building events just for your staff.

Contact [corporate@icr.ac.uk](mailto:corporate@icr.ac.uk) to discuss.



# Support EDI and social mobility in STEM

Twice per year, the ICR invites local students to our Careers in Research open evenings to meet scientists and learn about the broad range of careers in cancer research.

In 2026, 98% of students asked said they felt more inspired about pursuing a career in science after attending the event, and 95% had a better understanding of the skills needed.

If you would like to observe an open evening or discuss how your company can support the next generation of cancer researchers, please contact [corporate@icr.ac.uk](mailto:corporate@icr.ac.uk).



“I was utterly delighted to see just how focused the students were on the event. It was just brilliantly organised and the ICR team could not have been more wonderful – they were just so engaged with our students and their subject.”



Sophie Harrowes  
Careers Lead at Hammersmith Academy

---

# Helping you achieve your ESG goals

---

The ICR created the Centre for Global Oncology in 2022 to address inequalities in cancer treatment in lower and middle-income countries.

If your organisation has an interest in international development or the UN's Sustainable Development Goals, contact [corporate@icr.ac.uk](mailto:corporate@icr.ac.uk) to find out how you can support the Centre for Global Oncology.



“Cancer is a global challenge and we need to work together as a research community to tackle it. When we share resources and learnings it moves forward cancer research as a whole and strengthens the impact.”



Professor Anguraj Sadanandam  
Director of the Centre  
for Global Oncology  
at the ICR

# Creating the next generation of cancer research leaders

Witness the progress and results of a young researcher becoming a fully qualified cancer scientist and future leader in their field.

World-class medical research offers the greatest hope of defeating cancer, and training the next generation of scientists will ensure that progress continues.

The ICR is happy to discuss naming opportunities for any funded studentships.

Your company can contribute to funding a PhD student over four years, or a Clinical Research Fellow over two years.



“The ICR gives you a great foundation to start your career in cancer research – there are so many opportunities to learn the skills you need to thrive as a postdoc or a future team leader.”

Meg  
Former PhD student

# More ways to have positive impact

**Gifts in kind** – donate your products and services to support our mission.

**Pro bono support** – enjoy working closely with us as we exchange skills and ideas.

**Payroll giving** – it is quick and easy for staff to donate straight from their paycheque before tax. Visit <https://udon8.org/icr> to get started.



---

# Thank you.

---

Corporate partnerships make a tremendous difference to our mission.

They accelerate the pace and widen the scope of our research – driving the creation of new treatments and cures for people with cancer.

Thank you for your interest in our work. We hope to hear from you very soon.



# The Institute of Cancer Research is one of the world's most influential cancer research institutes

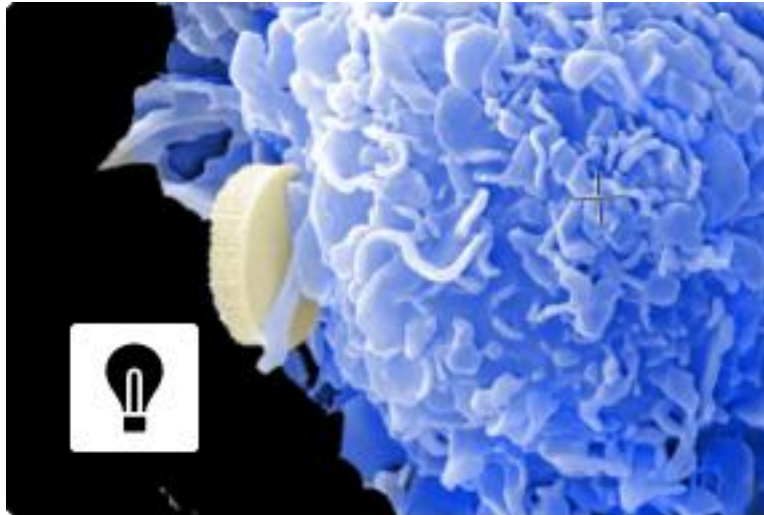
## Making discoveries

Scientists and clinicians are working in our labs every day to make a real impact on cancer patients' lives.



## Our unrivalled track record

Whether in cancer biology, genetics, personalised therapies or new drug discoveries, our achievements speak for themselves.



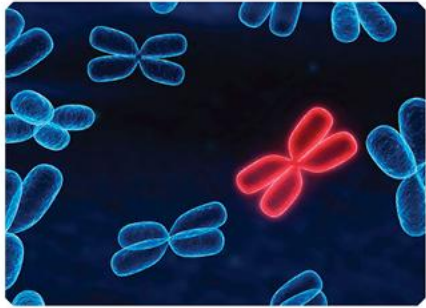
## Translational research

Our unique partnership with the Royal Marsden and bench-bedside approach means we create and deliver results in a way that other institutions cannot.



Unrivalled  
track record

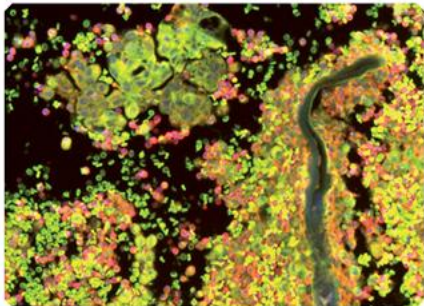
**ICR** The Institute of  
Cancer Research



**Making the  
discoveries that  
defeat cancer**



**ICR**



One of the world's  
most influential  
cancer research  
institutes